

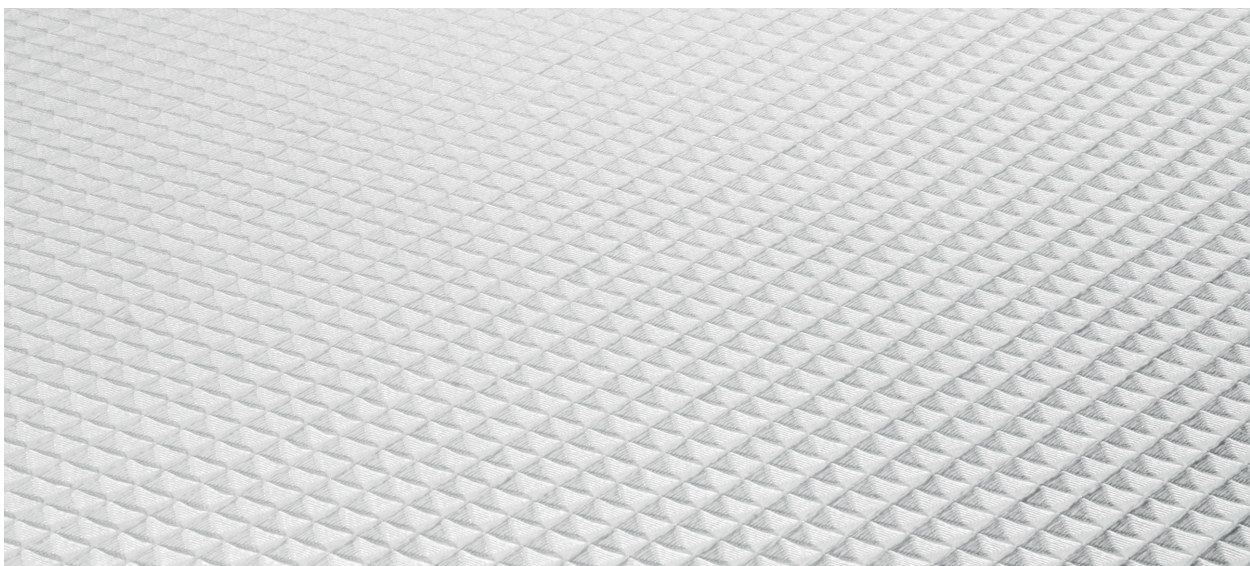
# CUBIC pico

As at: 03/14/2024

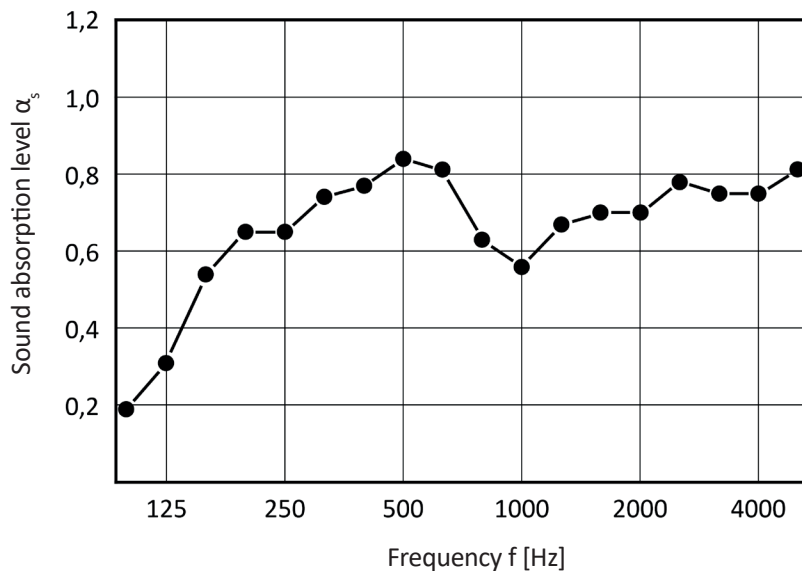
CUBIC pico keeps its shape extremely well. The sound absorption is optimised with the aid of the fabric's extravagant geometrical and three-dimensional structure, which makes it particularly suitable for wall, ceiling and room divider elements.

<b>Use</b>	acoustics & soundproofing, wall & ceiling, curtains
<b>Colour</b>	off-white, customised colours available on request
<b>Material</b>	100 % Polyester FR, Trevira CS
<b>Fabric weight</b>	518 g/m <sup>2</sup> +/- 5 %
<b>Fabric width</b>	standard: 154 cm +/- 5 %
<b>Fabric thickness</b> acc. to DIN EN ISO 5084	3,80 mm
<b>Fire resistance rating</b> acc. to DIN EN ISO 4102	flame retardant standard B1
<b>Air permeability</b> acc. to DIN EN ISO 9237	400 l/m <sup>2</sup> /s
<b>Light fastness</b> acc. to DIN 53952	> 6
<b>Abrasion rating</b> acc. to ISO 12947-1	60.000 Martindale
<b>Care</b>	non-washable; wear white cotton gloves when fitting the fabric; surface dirt can be removed by carefully patting or vacuuming the fabric; carefully pat the fabric with a damp cloth to remove dirt – do not rub; seal edges with heated fabric edging scissors
<b>Specific flow resistance</b> acc. to DIN EN ISO 29053	R <sub>s</sub> = 393 Pa s/m

The technical specifications are valid for four months from receipt. Technical specifications may differ for dyed fabric.



## Sound absorption level acc. to DIN EN ISO 354



**Testing method details:**  
Measured as plane absorber at a distance to the floor in a sealed frame acc. to DIN EN ISO 354 Section 6.2.1 and Appendix 8.4

**Testing method: Type E-150:**  
- Acoustic fabric tightly stretched across a wooden frame  
- 150 mm clearance  
- Floor

General measurement information:

Specimen area	10,80 m <sup>2</sup>	Specimen area	10,80 m <sup>2</sup>
Reverb. room volume:	203,3 m <sup>3</sup>	Reverb. room volume:	203,3 m <sup>3</sup>
Reverb. room surfaces:	212,3 m <sup>2</sup>	Reverb. room surfaces:	212,3 m <sup>2</sup>

Frequency [Hz]	Sound absorption level acc. to ISO 354 $\alpha_s$	Practical sound absorption coefficient $\alpha_p$	Frequency [Hz]	Sound absorption level acc. to ISO 354 $\alpha_s$	Practical sound absorption coefficient $\alpha_p$
100	0,20		800	0,86	
125	0,17	0,25	1000	0,70	0,70
160	0,45		1250	0,56	
200	0,48		1600	0,62	
250	0,64	0,60	2000	0,73	0,70
315	0,61		2500	0,70	
400	0,78		3150	0,74	
500	0,81	0,80	4000	0,75	0,75
630	0,86		5000	0,77	

Classification acc. to DIN EN ISO 11654: **classified sound absorption coefficient  $\alpha_w = 0,75$** ; sound absorption class: C

**Property Rights**

Any use of intellectual property of the Getzner Textil AG, including but not limited to reproduction, dissemination or publication, even in part, beyond the contractually agreed own use, shall be prohibited. Getzner Textil AG reserves all rights and possible compensation.